

George
Reference 020056

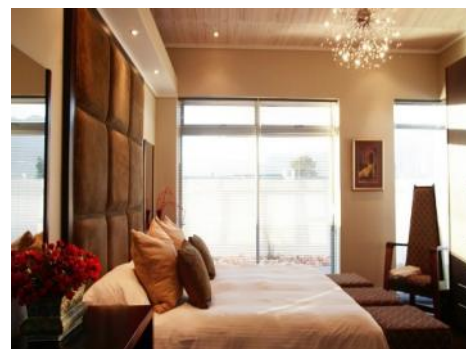


Unique house with modern style in George

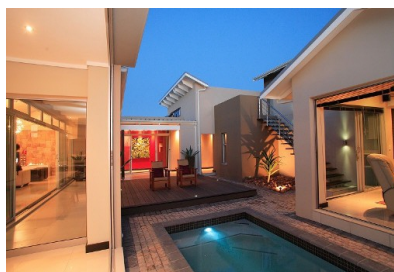
living space: 260 m²
plot area: 600 m²
bedrooms: 4
bathrooms: 3
sea view: -

energy certificate: -

price: \$ 484,391.-



George
Reference 020056



Details:

This very modern and beautiful house, located on an approx. 600 sqm plot of land, has a floor space of about 260 sqm.

The striking architecture of this house makes it very unique. It has four bedrooms and three bright spacious bathrooms with a large bathtub. There is also a kitchen, a large living and dining area with large windows overlooking the sea, an entertainment area, a laundry room and a dressing room.

The house has wood flooring and tiles.

Further the exterior area of this beautiful house offers a pool and barbeque area as well as two garages.

George

Reference 020056

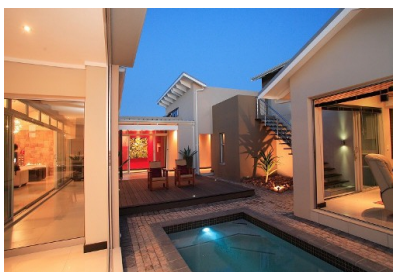


Location & surrounding area:

George is situated about 430 km from Cape Town. With about 213,757 inhabitants, the town is one of the largest of Western Cape's.

Only a few kilometers from the Indian Ocean, George spreads out on a plateau on the southern edge of the Outeniqua Mountains.

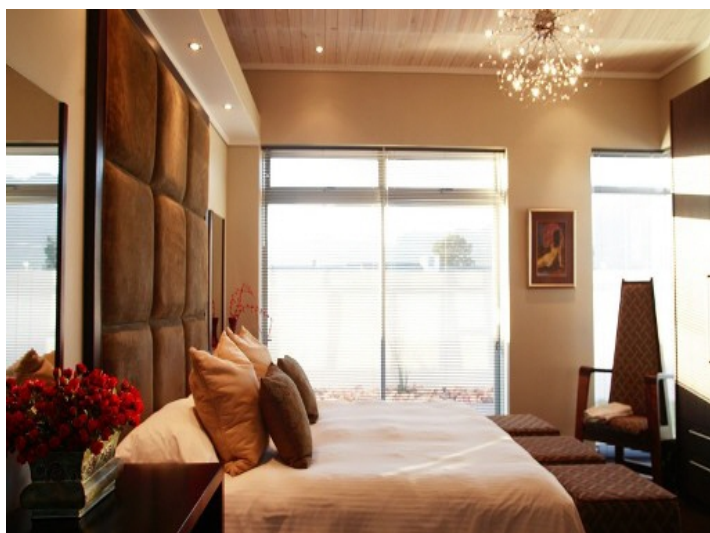
George
Reference 020056



Beautiful living area



Living area and kitchen



Bright bedroom



Large bathroom



All information is correct to the best of our knowledge. Errors and prior sale excepted. This prospectus is purely for information purposes. Only the notarized deed of sale is legally binding.

PORTA MONDIAL • C./ CONQUISTADOR 8, E-07001 PALMA DE MALLORCA
TEL. +34 971 720 164 • INFO@PORTAMONDIAL-SOUTHAFRICA.COM