

George  
Reference 020064

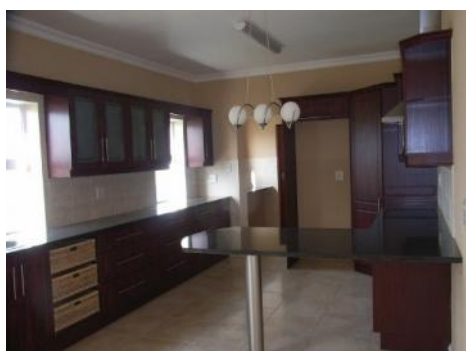


Here everything is in your adjacency

living space: 360 m<sup>2</sup>  
plot area: 960 m<sup>2</sup>  
bedrooms: 4  
bathrooms: 4  
sea view: -

energy certificate: in process

price: \$ 460,503.-



## George Reference 020064



### Details:

This beautiful and spacious property spread over two floors has a site area of approx. 960 sqm and a living area of approx. 360 sqm. Outside the entrance area it is featured with a fountain. Furthermore the house has a bright, spacious living area with a fireplace. The four bedrooms, each are featured with a bathroom en suite and also include a private balcony. From the modern kitchen you enter the spacious dining area.

In addition this property is provided with a double garage, a barbecue area, a guest toilet and a patio.

Last but not least there is a golf course nearby, and from the spacious balconies you have a beautiful view of the Outeniqua Mountains.

## George

### Reference 020064



### Location & surrounding area:

George is situated about 430 km from Cape Town. With about 213,757 inhabitants, the town is one of the largest of Western Cape's.

Only a few kilometers from the Indian Ocean, George spreads out on a plateau on the southern edge of the Outeniqua Mountains.



George  
Reference 020064



Modern kitchen



Spacious entrance hall



Bright room



Beautiful bathroom



Spacious balcony



Wonderful view from the house

All information is correct to the best of our knowledge. Errors and prior sale excepted. This prospectus is purely for information purposes. Only the notarized deed of sale is legally binding.