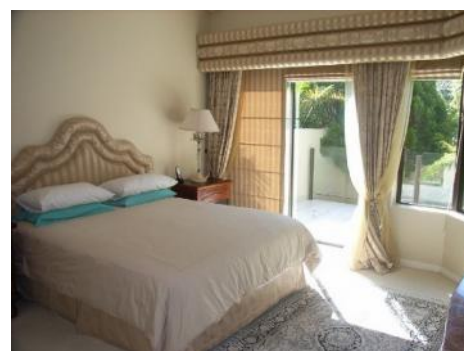


George
Reference 020096



Lovely property with well-kept garden

living space:	450 m ²	energy certificate:	in process
plot area:	1.414 m ²		
bedrooms:	5		
bathrooms:	4		
sea view:	-	price:	\$ 736,540.-



George
Reference 020096



Details:

Awesome mansion with 4 living areas, BBQ inside and outside, swimming pool and all what a heart can desire.

It is very modern and well-kept, the large garden completes the incredible impression.

George

Reference 020096



Location & surrounding area:

George is situated about 430 km from Cape Town. With about 213,757 inhabitants, the town is one of the largest of Western Cape's.

Only a few kilometers from the Indian Ocean, George spreads out on a plateau on the southern edge of the Outeniqua Mountains.

George
Reference 020096



Elegant bathroom



Stunning kitchen



Great bedroom



Comfortable living room

All information is correct to the best of our knowledge. Errors and prior sale excepted. This prospectus is purely for information purposes. Only the notarized deed of sale is legally binding.

PORTA MONDIAL • C./ CONQUISTADOR 8, E-07001 PALMA DE MALLORCA
TEL. +34 971 720 164 • INFO@PORTAMONDIAL-SOUTHAFRICA.COM