

Platteklouf

Reference 040042

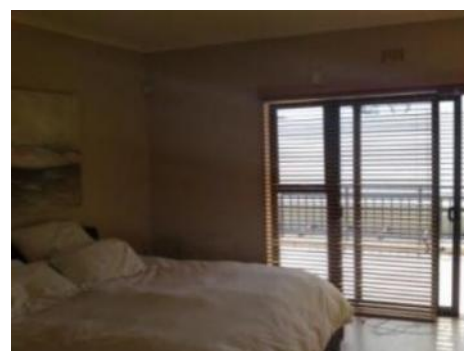
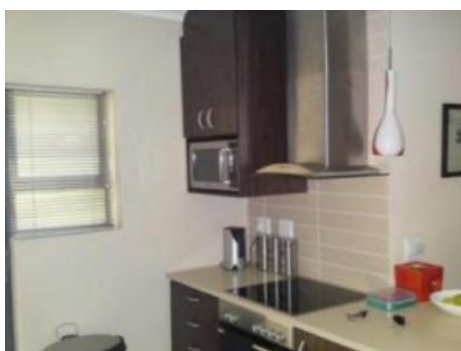
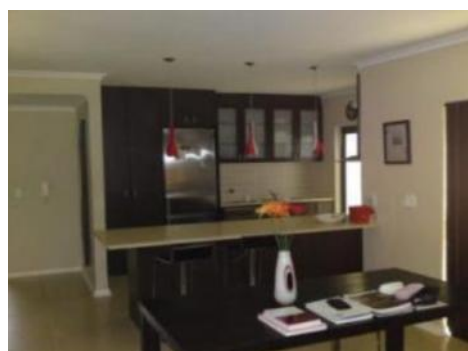


Great house, great views

living space: 190 m²
plot area: 165 m²
bedrooms: 3
bathrooms: 3
sea view: -

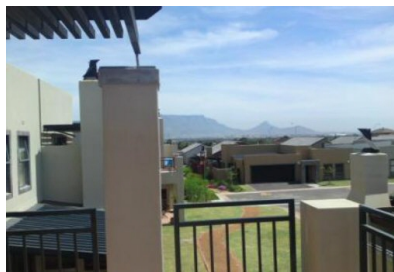
energy certificate: in process

price: \$ 228,400.-



Plattekloof

Reference 040042



Details:

Great home with views of the mountains.

It is situated in a security complex and has got additionally a tennis court and an alarm system.

There are the Panorama hospital and schools and it is close to the roads to the beach and to Durbanville.

Plattekloof

Reference 040042



Location & surrounding area:

Plattekloof

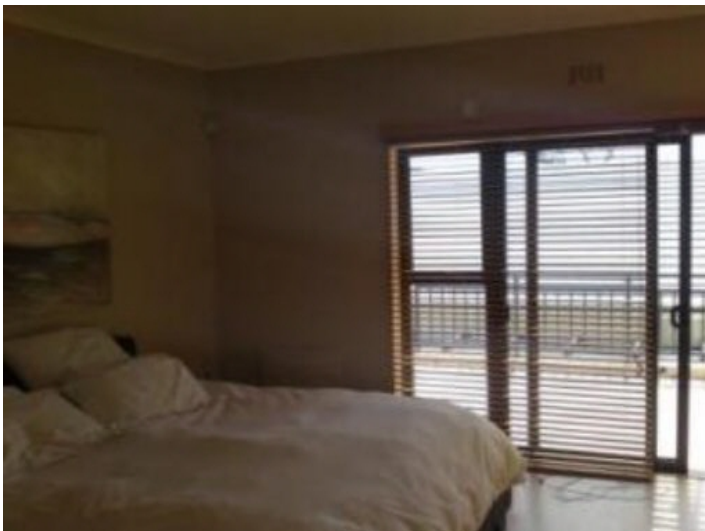
Reference 040042



Classy interior



Modern kitchen



Comfortable bedroom

All information is correct to the best of our knowledge. Errors and prior sale excepted. This prospectus is purely for information purposes. Only the notarized deed of sale is legally binding.

PORTA MONDIAL • C./ CONQUISTADOR 8, E-07001 PALMA DE MALLORCA
TEL. +34 971 720 164 • INFO@PORTAMONDIAL-SOUTHAFRICA.COM